

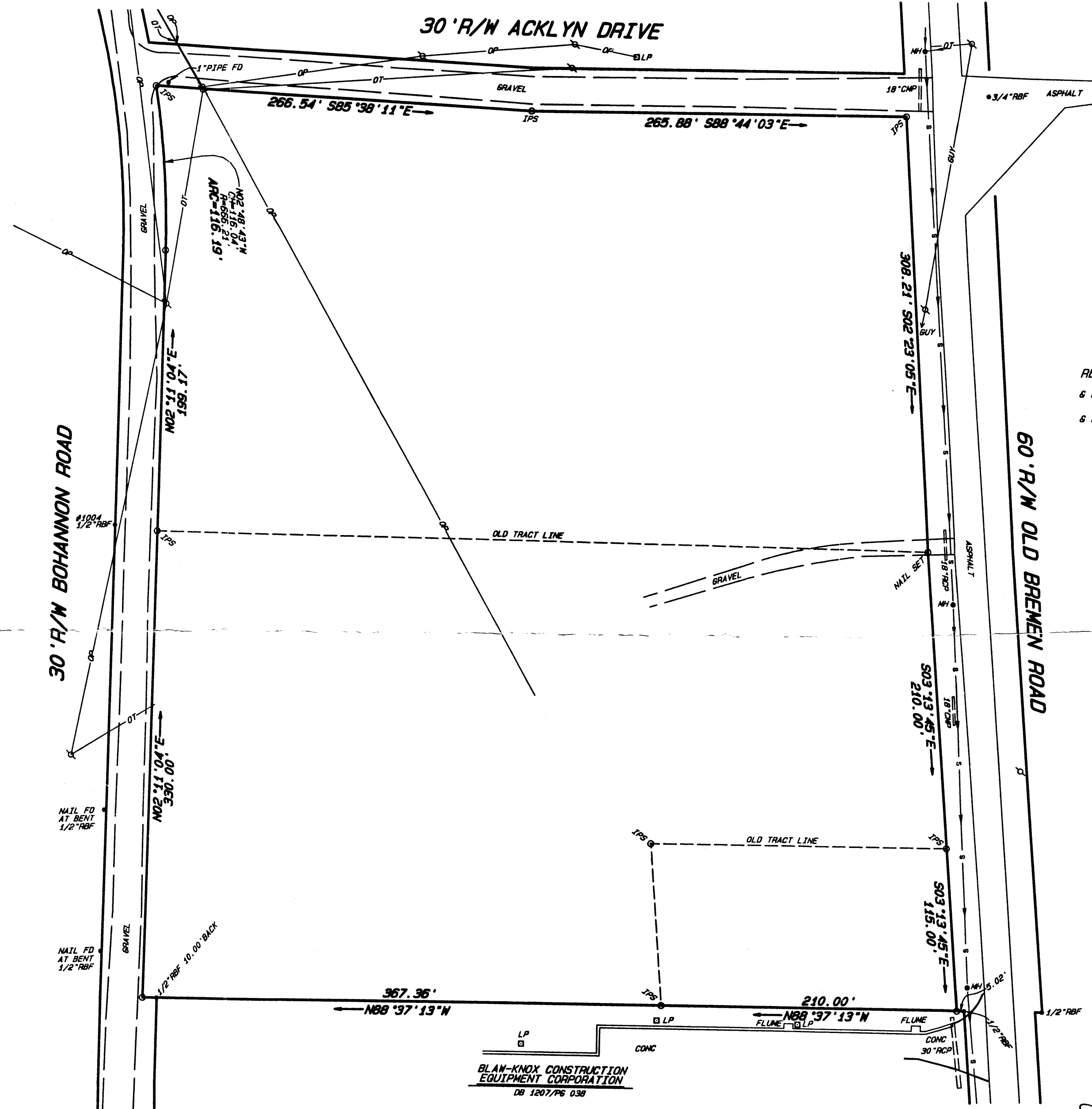
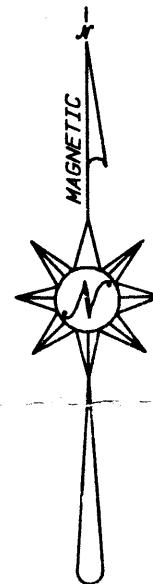
LEGEND:

- BL - BUILDING LINE
- BM - BENCH MARK
- CB - CATCH BASIN
- CD - CROSS DRAIN
- CL - CENTER LINE
- DA - DRAINAGE AREA
- DI - DROP INLET
- EL - ELEVATION
- FF - FINISHED FLOOR
- FH - FIRE HYDRANT
- HBC - HI-BACK CURB
- HM - HEAD MALL
- JB - JUNCTION BOX
- LLL - LAND LOT LINE
- MT - MARKED TREE
- MH - MANHOLE
- NGC - NAIL IN CAP
- OL - ON LINE
- OH - OVERHEAD
- PL - PROPERTY LINE
- R - RADIUS
- RBF - R-BAR FOUND
- R/W - RIGHT-OF-WAY
- TH - TEST HOLE
- TL - TRAVERSE LINE
- UG - UNDERGROUND
- WV - WATER VALVE
- IRF - INTERMEDIATE REGIONAL FLOOD
- RDP - RESIDENTIAL DRAINAGE PLAN REQUIRED
- RDS - RESIDENTIAL DRAINAGE STUDY REQUIRED
- CE - CONSTRUCTION EASEMENT (TEMPORARY)
- CMF - CONCRETE MONUMENT FOUND
- CMP - CORRUGATED METAL PIPE
- CTF - CRIMP TOP TUBE FOUND
- DE - DRAINAGE EASEMENT
- FES - FLARED END SECTION
- FIRM - FLOOD INSURANCE RATE MAP
- HLP - HOUSE LOCATION PLAN REQUIRED
- HTF - HOLLOW TUBE FOUND
- HML - 100 YEAR HIGH WATER LEVEL
- IE - INVERT ELEVATION
- IPS - ONE-HALF INCH R-BAR SET
- PC - POINT OF CURVATURE
- PCC - POINT OF COMPOUND CURVATURE
- PI - POINT OF INTERSECTION
- PRC - POINT OF REVERSE CURVATURE
- PT - POINT OF TANGENCY
- RCP - REINFORCED CONCRETE PIPE
- SE - SEWER EASEMENT
- UE - UTILITY EASEMENT
- C-T - CABLE TV LINE & POLE
- G - GAS LINE
- P-E - POWER LINE & POLE
- S - SEWER LINE & MANHOLE
- T-E - TELEPHONE LINE & POLE
- W-E - WATER LINE & FIRE HYDRANT
- F - FENCE LINE

NOTES:

1. SURVEY PROCEDURES: THIS SURVEY BASED ON MEASUREMENTS OBTAINED USING AN INSTRUMENT CAPABLE OF READING ANGULAR MEASUREMENTS DIRECTLY TO A MINIMUM OF 5 SECONDS OF ARC AND LINEAR DIMENSIONS DIRECTLY TO 0.01 FEET.
2. THE FIELD DATA UPON WHICH THIS PLAT IS BASED HAS A MINIMUM PRECISION RATIO OF ONE FOOT IN 87,701 FEET, AND AN AVERAGE ANGULAR ERROR OF 4.3 SECONDS PER ANGLE POINT, AND WAS ADJUSTED BY COMPASS RULE.
3. DATA SHOWN ON THIS PLAT HAS BEEN CALCULATED FOR CLOSURE AND HAS A MINIMUM PRECISION RATIO OF ONE FOOT IN 333,538 FEET.
4. ROAD R/W WIDTHS FROM INFORMATION PROVIDED BY THE CARROLL COUNTY PUBLIC WORKS DEPARTMENT.
5. INITIAL SURVEY MADE JUNE 17, 2004.

REFERENCE SURVEYS:
 SURVEY FOR LINCO DEVELOPMENT COMPANY BY HANNON, MEEKS & BAGWELL; DATED JUNE 17, 2004 & CONTAINING 3.6549 ACRES.
 SURVEY FOR LINCO DEVELOPMENT COMPANY BY HANNON, MEEKS & BAGWELL; DATED JUNE 17, 2004 & CONTAINING 3.7788 ACRES.



BLAN-KNOX CONSTRUCTION
 EQUIPMENT CORPORATION
 DB 1207/P6 038



**COMPOSITE PLAT FOR:
 LINCO DEVELOPMENT COMPANY
 BOHANNON ROAD PROPERTY**

LAND LOT 195 OF THE 10TH DISTRICT
 CARROLL COUNTY, GEORGIA 7.9963 ACRES

DATE:	NO.	DATE	REVISION DESCRIPTION
JULY 18, 2005			
SCALE: 1"=60'			

SPECIAL NOTICE
 THE SURVEYING AND ENGINEERING SERVICES RELATING TO THE DEVELOPMENT AND PRESENTATION OF THIS DRAWING, STATEMENTS AND DATA SHOWN HEREON, AS WELL AS ANY CERTIFICATIONS SHOWN HEREON, HAVE BEEN PERFORMED BY THE SURVEYOR/ENGINEER BASED UPON THE SURVEYORS/ENGINEERS KNOWLEDGE, INFORMATION AND BELIEF, AND IN ACCORDANCE WITH COMMONLY ACCEPTABLE PROCEDURES CONSISTENT WITH APPLICABLE STANDARDS OF PRACTICE, AND DOES NOT CONSTITUTE A GUARANTEE OR WARRANTY, EITHER EXPRESSED OR IMPLIED.



HANNON, MEEKS & BAGWELL, SURVEYORS & ENGINEERS, INC.
 LAND PLANNING SUITE 400
 LAND SURVEYING 4317 PARK DRIVE
 CIVIL ENGINEERING NORCROSS, GEORGIA 30093
 TELEPHONE: (770) 963-7181
 MACK L. MEEKS ... I. S. NO. 1497
 JAMES J. LOCKHART ... I. S. NO. 2068
 MILES H. HANNON ... I. S. NO. 1528
 C. BLUE BAGWELL ... P. E. NO. 7045